

# Model 450AJ

## ARTICULATING BOOM LIFT

# JLG®

### STAGE 5 COMPLIANT

### MORE ECONOMIC

- Cut fuel consumption and operating costs with variable engine control.

### MORE PRODUCTIVE

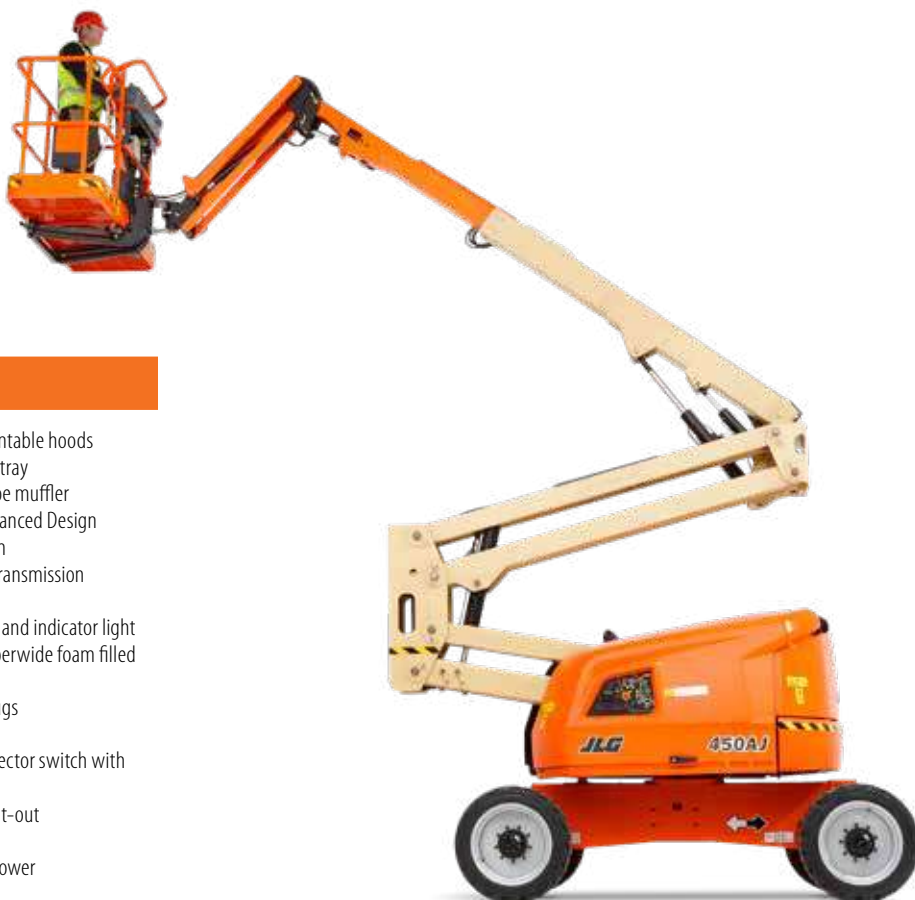
- Start work quicker with industry leading elevation time.\*  
Carry more tools and materials and be able to work longer with 250 kg basket weight capacity.

### MORE ACCESS

- Increase your work envelope with more horizontal reach. (\*Compared with previous model.)

### SMART DESIGN

- Reduce maintenance with DuraTough turntable hood. High impact resistance and protects components.



\*50% faster compared with previous model. Actual timings may vary.

### Standard Features

- 0.76 m x 1.83 m low mount platform
- Side entry with drop bar mid rail
- Multiple function operation
- Full proportional drive joystick control with integral thumb steer switch
- Full proportional main boom and swing joystick control
- Multiple speed control for lower boom, telescope and platform rotate
- Selectable creep speed on drive / lift and swing functions
- 1.24 m articulating jib
- 170 degree powered platform rotator
- Platform console machine status light panel<sup>1</sup>
- Load sensing system
- AC power cable to platform
- Engine distress warning /shut down system<sup>2</sup>
- Gull wing steel turntable hoods
- Swing-out engine tray
- Spark arresting type muffler
- Control ADE® (Advanced Design Electronics) System
- Hydrostatic drive transmission
- Horn
- 4 degree tilt alarm and indicator light
- 33/1550 x 16.5 superwide foam filled tyres
- Lifting/tie down lugs
- Hour meter
- Ground control selector switch with key lock
- Low fuel engine cut-out
- Platform tool tray
- 12V-DC auxiliary power

### Standard Specifications

- |                      |                              |
|----------------------|------------------------------|
| • Diesel Engine      | 36 kW (49hp) Deutz D2.9L4    |
| • Fuel Tank Capacity | 60.5 L                       |
| • Hydraulic System   | 144 L                        |
| • Auxiliary Power    | 12V DC                       |
| • Tyres              | 33/1550 x 16.5 (Foam Filled) |

### Accessories & Options

- 0.76 m x 1.22 m low mount platform
- 0.76 m x 1.52 m low mount platform
- 0.76 m x 0.91 m low mount platform, rear entry
- Side entry with inward swing gate
- 13 mm air line to platform
- Four wheel drive
- 14 x 17.5 foam filled tyres
- Oscillating front axle
- On-board 4,000W generator
- SkyPower® package 7,500 watt on-board generator
- SkyWelder® package 250 amp welder in the platform
- All motion alarm
- Light package<sup>4</sup>
- Platform worklights
- Head & Tail Lights
- Flashing amber beacon
- Plugs & Sockets
- Hostile environment package<sup>3</sup>
- Catalytic purifier muffler
- Skyguard with beacon
- Skyguard without beacon
- Corner storage tray
- ClearSky Locate
- ClearSky CAN

<sup>1</sup> Provides indicator lights at platform control console for system distress, low fuel, tilt light, and foot switch status.

<sup>2</sup> Low oil pressure and high coolant temperature alarms with shut-down enabled/disabled by analyser.

<sup>3</sup> Includes console cover, boom wipers and cylinder bellows.

<sup>4</sup> Includes platform mounted work lights and head & tail lights.

# Model 450AJ

## ARTICULATING BOOM LIFT

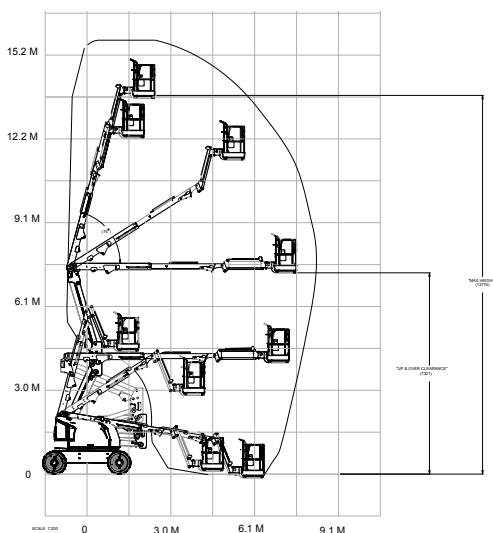
### Performance

• Working Height	15.77 m
• Platform Height	13.72 m
• Horizontal Outreach	7.62 m
• Working Outreach **	8.27 m
• Up and Over Height	7.30 m
• Swing	355° (Non-Continuous)
• Platform Capacity (Unrestricted)	250 kg
• Platform Rotator (Hydraulic)	180°
• Jib - Overall Length	1.24 m
• Jib - Range of articulation	145° (+76°/-69°)
A. Platform Size	0.76 m x 1.83 m
B. Overall Width (Axles Retracted)	2.35 m
C. Tailswing (working condition)	Zero
D. Stowed Height	2.27 m
E. Stowed Length	6.58 m
F. Wheelbase	2.36 m
G. Ground Clearance	0.42 m
• Machine weight *	6,495 kg
• Maximum Ground Bearing Pressure	4.0 kg/cm <sup>2</sup>
• Drive Speed 4WD	6.8 km/h
• Gradeability 4WD	45%
• Axle Oscillation	0.10 m
• Turning Radius - Inside	2.06 m
• Turning Radius - Outside	4.78 m

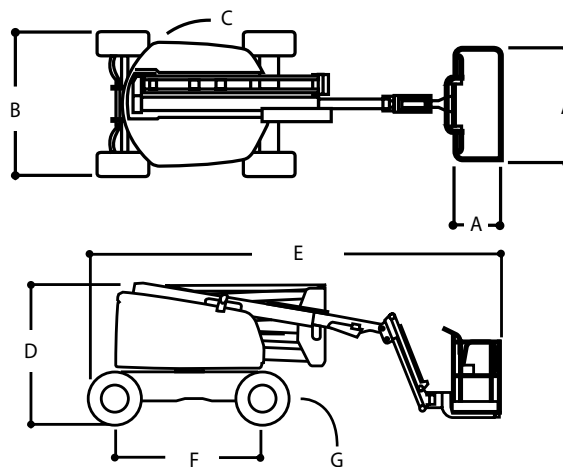


\* Certain options or country standards may increase weight and/or dimensions  
 \*\* Incl. 0.65 m outreach beyond platform

### Reach Diagram



### Dimensions



### IMPORTANT

JLG is continually researching and developing products and reserves the right to make modifications without prior notice. All data in this document is indicative. Certain options or country standards will increase weight. Specifications may change to meet country standards or with the addition of optional equipment.

Due to continuous product improvements, JLG Industries reserves the right to make specification and/or equipment changes without prior notification.



### JLG EMEA BV

Polaris Avenue 63  
 2132 JH Hoofddorp  
 The Netherlands  
 Phone: +31 (0)23 565 5665  
[www.jlg.com](http://www.jlg.com)

An Oshkosh Corporation Company